

Notice de pose

Platine pour poteaux

PVC 80x80 et 120x120



SOLUTIONS
pour votre habitat



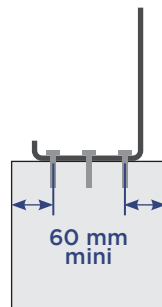
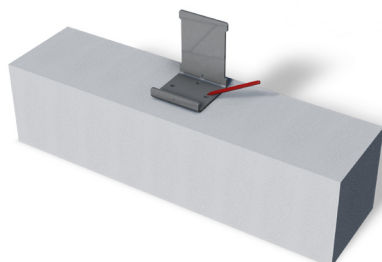
CONCEPTEUR & FABRICANT FRANÇAIS

Pose

PRINCIPE DE POSE D'UNE PLATINE

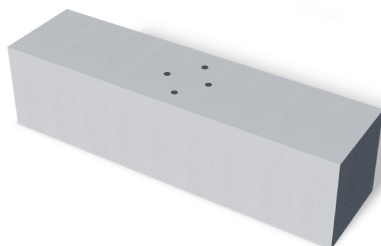
ÉTAPE 1

Positionner et tracer.



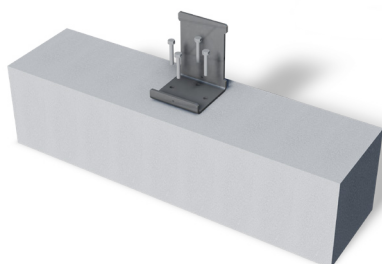
ÉTAPE 2

Percer \varnothing 9 mm.



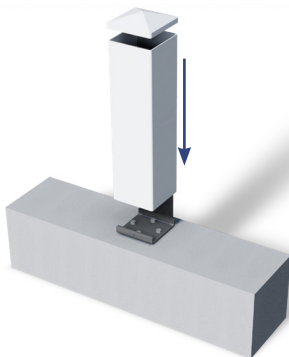
ÉTAPE 3

Visser la platine (adapter le type de fixation en fonction du support).



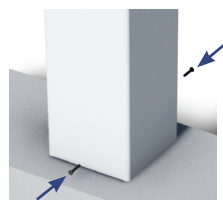
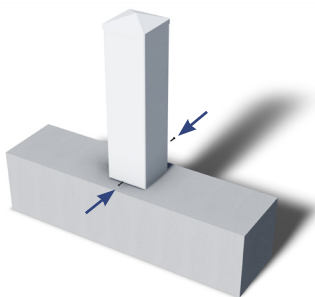
ÉTAPE 4

Glisser le poteau.



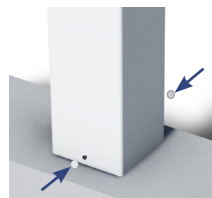
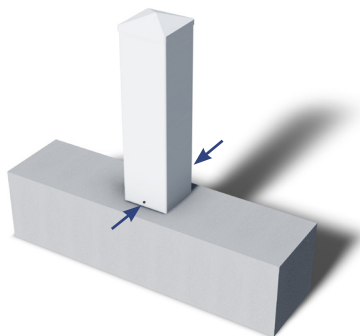
ÉTAPE 5

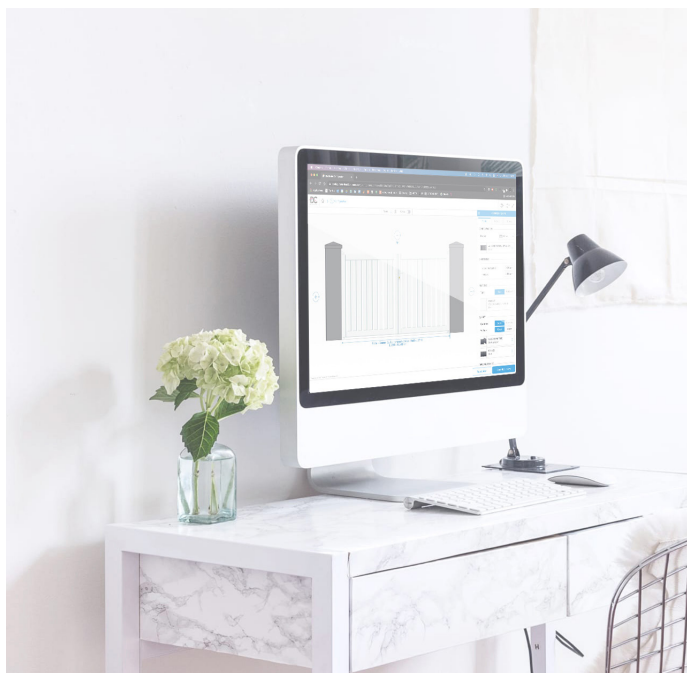
Fixer le poteau à la platine à l'aide des vis autoforeuse 4.8 x 19



ÉTAPE 6

Positionner les caches vis.





Retrouvez toutes nos notices sur
notre site internet

dc-designconception.fr

0 892 681 310 Assistance technique
0.40€/min

sav@dcprod.fr